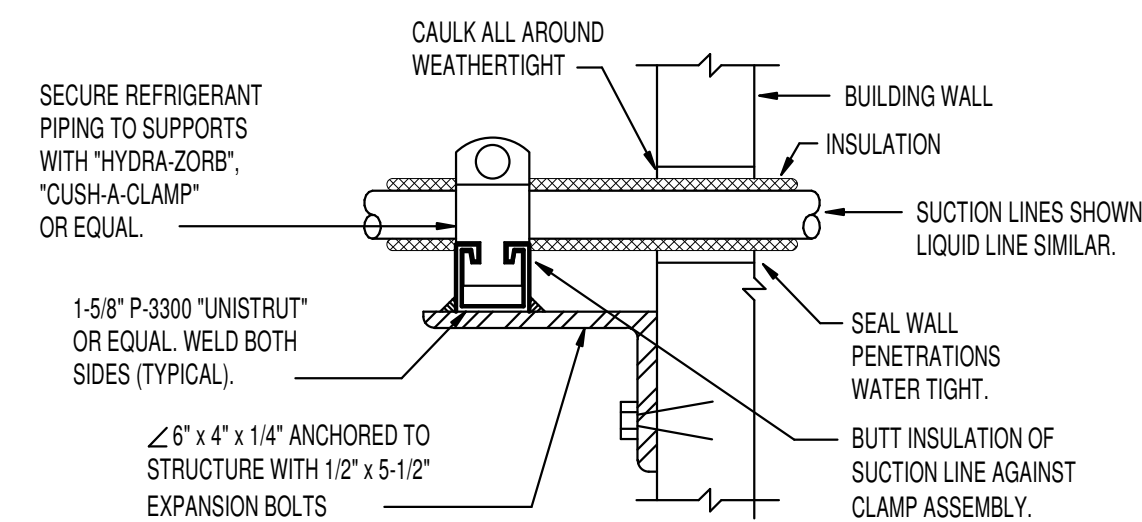


A SUSPENDED PIPE SUPPORT

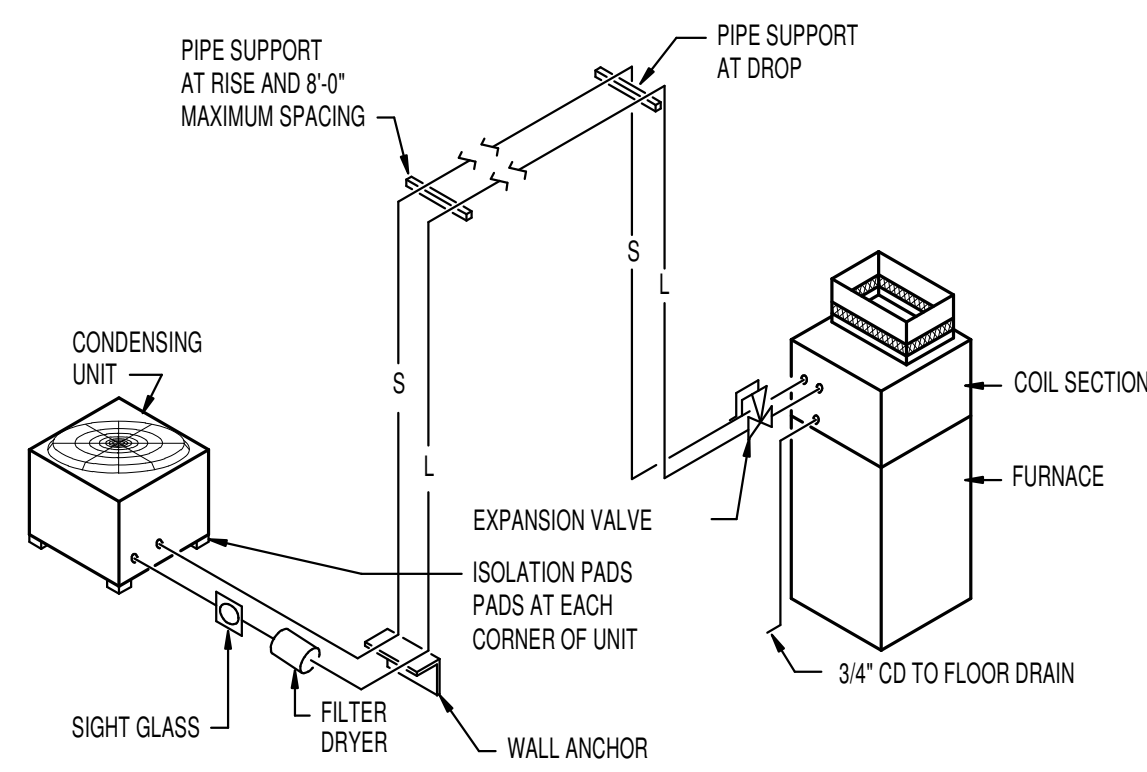
NO SCALE

NOTE:
PAINT ANGLE SUPPORTS
TO MATCH BLDG. FACE
BRICK COLOR (TYP)



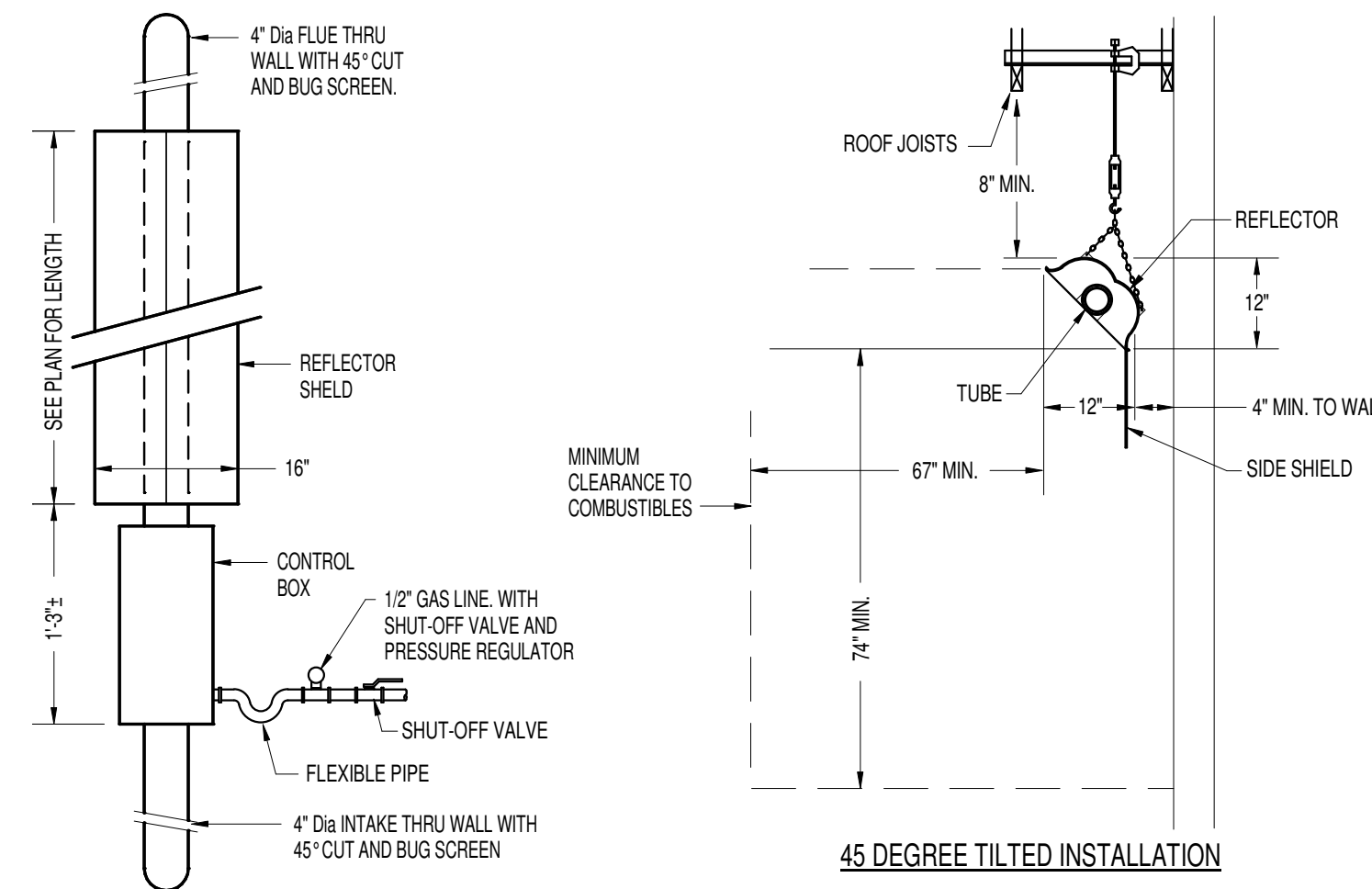
B REFRIG. PIPING SUPPORT AT WALL DETAIL

NO SCALE



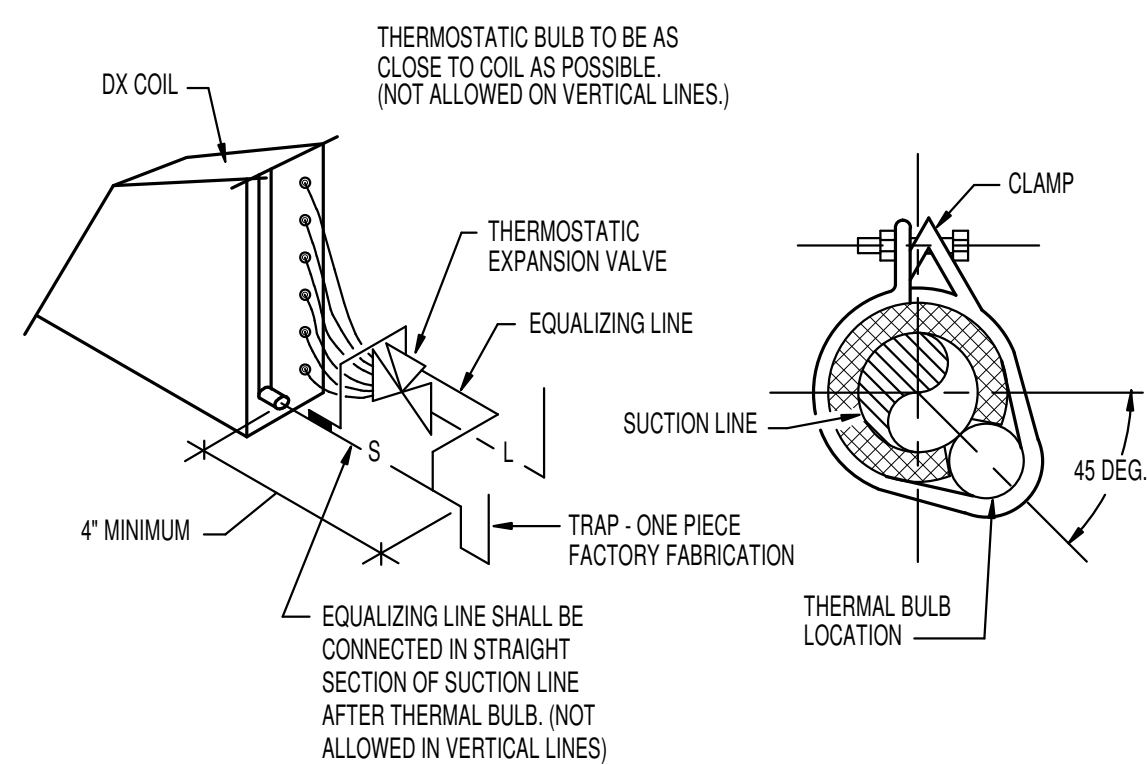
C REFRIGERANT PIPING DIAGRAM

NO SCALE



D RADIANT HEATER INSTALLATION DETAILS

NO SCALE



E REFRIGERANT COIL CONNECTION DETAIL

NO SCALE

GRILLE AND REGISTER SCHEDULE

SYM.	SIZE	THROW	CFM	CONSTR.	FINISH	BRANCH DUCT	F.D.	O.B.	REMARKS
CD-1	9 x 9	18"	50-180	STEEL	WHITE	8" Dia.	NO	NO	PRICE MODEL SMD IN 24x24 LAY-IN MODULE
CD-2	9 x 9	18"	50-180	STEEL	WHITE	10" Dia.	NO	NO	PRICE MODEL SMD WITH BEVELED FRAME
CD-3	12 x 12	18"	200-450	STEEL	WHITE	10" Dia.	NO	NO	PRICE MODEL SMD IN 24x24 LAY-IN MODULE
RG-1	12 x 12		50-450	STEEL	WHITE	12 x 10	NO	NO	PRICE MODEL 535 IN 24x24 LAY-IN MODULE
RG-2	18 x 18		450-900	STEEL	WHITE	18 x 10	NO	NO	PRICE MODEL 535 IN 24x24 LAY-IN MODULE
RG-3	24 x 48		2000-3600	STEEL	WHITE	24 x 48	NO	NO	PRICE MODEL 635S (SIDEWALL)
ER-1	14 x 14		---	ALUM.	WHITE	14 x 14	NO	NO	PRICE SERIES 82 EGG CRATE FACE
COL-1	24 x 48		2000-3600	ALUM.	ANODIZED	24 x 48	NO	NO	AMERICAN WARMING LE-31 WITH DRAINABLE BLADES AND BIRD/BUG SCREEN.
COL-2	12 x 12		200	ALUM.	ANODIZED	10 x 6	NO	NO	AMERICAN WARMING LE-31 WITH DRAINABLE BLADES AND BIRD/BUG SCREEN.

EXHAUST FAN SCHEDULE

SYM.	TYPE	C.F.M.	S.P.E.	WATTS	CHAR.	R.P.M.	CONTROL	REMARKS
EF-1	CEILING MOUNTED	200	25"	127	120/60/1	740	CLG STAT	TWIN CITY MODEL T200 WITH BACK-DRAFT DAMPER AND 10x4 DUCT UP TO ROOF CAP.
EF-2	CEILING MOUNTED	150	25"	100	120/60/1	710	WITH LIGHTS	TWIN CITY MODEL T150 WITH BACK-DRAFT DAMPER AND 6" Dia. DUCT UP TO ROOF CAP.
EF-3	CEILING MOUNTED	150	25"	100	120/60/1	710	WITH LIGHTS	TWIN CITY MODEL T150 WITH BACK-DRAFT DAMPER AND 6" Dia. DUCT UP TO ROOF CAP.
EF-4	CEILING MOUNTED	200	25"	127	120/60/1	740	WITH LIGHTS	TWIN CITY MODEL T200 WITH BACK-DRAFT DAMPER AND 10x4 DUCT UP TO ROOF CAP.
EF-5	CEILING MOUNTED	150	25"	100	120/60/1	710	WALL SWITCH	TWIN CITY MODEL T150 WITH BACK-DRAFT DAMPER AND 6" Dia. DUCT UP TO ROOF CAP.
EF-6	ROOF MOUNTED	3600	.125"	1/4 HP	120/60/1	1400	WALL SWITCH	TWIN CITY MODEL 085C BCRD WITH BACK-DRAFT DAMPER AND 14x14 DUCT THRU ROOF.
EF-7	ROOF MOUNTED	2000	.125"	1/4 HP	120/60/1	700	WALL SWITCH	TWIN CITY MODEL 085C BCRD WITH BACK-DRAFT DAMPER AND 14x14 DUCT THRU ROOF.
EF-8	PENDANT	---	---	10 AMPS	120/60/1	158	WALL SWITCH	'BIG ASS' ESSENCE. 8"-0" DIAMETER FAN. MOUNT AT 20'-0" ABOVE FLOOR.
EF-9	PENDANT	---	---	10 AMPS	120/60/1	158	WALL SWITCH	'BIG ASS' ESSENCE. 8"-0" DIAMETER FAN. MOUNT AT 20'-0" ABOVE FLOOR.

CONDENSING UNIT SCHEDULE

SYM.	BTU	EAT	CHAR.	MCA	WEIGHT	REFRIGERANT PIPING		REMARKS
						LIQUID	SUCTION	
CU-1	56,000	95°F	208/230V - 1 PH	34.6	250#	3/8"	1-1/8"	LENNOX 13ACX-060 WITH LOW AMBIENT 'HARD-START' KIT

FURNACE SCHEDULE

SYM.	TYPE	DESIGN CFM	O.A. CFM	S.P.E.	H.P.	CHAR.	A.G.A.		EAT	LAT	SUP	VENT	GAS TYPE	REMARKS
							INPUT	OUTPUT						
F-1	UP-FLOW	1850	200	.5"	1	120/60/1	110,000	106,000	65°F	10 Deg. F	1/2"	(2) 3" Dia.	NAT.	LENNOX EL196UH10P90C COMPLETE WITH MATCHING DX COIL.

RADIANT HEATER SCHEDULE

SYM.	TYPE	BTU	# BURNERS	AMPS	CHAR.	SEC. LENGTH	GAS SIZE	FUEL	TUBE SIZE	REMARKS
RH-1	STRAIGHT - 45 Deg. TILT	150,000	1	1	120/60/1	60'-0"	1/2"	NAT	4"	SUPERIOR RADIANT PRODUCTS SERIES UA150N3A COMPLETE WITH REFLECTOR AND SIDE SHIELD. MOUNT AS HIGH AS POSSIBLE.
RH-2	STRAIGHT - 45 Deg. TILT	150,000	1	1	120/60/1	60'-0"	1/2"	NAT	4"	SUPERIOR RADIANT PRODUCTS SERIES UA150N3A COMPLETE WITH REFLECTOR AND SIDE SHIELD. MOUNT AS HIGH AS POSSIBLE.
RH-3	STRAIGHT - 45 Deg. TILT	150,000	1	1	120/60/1	60'-0"	1/2"	NAT	4"	SUPERIOR RADIANT PRODUCTS SERIES UA150N3A COMPLETE WITH REFLECTOR AND SIDE SHIELD. MOUNT AS HIGH AS POSSIBLE.

UNIT HEATER SCHEDULE

SYM.	TYPE	CFM	H.P.	CHAR.	A.G.A.		EAT	LAT	SUP.	FUEL TYPE	FLUE	WEIGHT	REMARKS
					INPUT	OUTPUT							
UH-1	PROPELLER	960	1/20	120/60/1	75,000	62,250	65°F	110°F	1/2"	NAT.	(2) 4" Dia.	100#	REZNOR UDAS-75 SEPARATED COMBUSTION UNIT WITH WALL MOUNTED SENSOR
UH-2	PROPELLER	960	1/20	120/60/1	75,000	62,250	65°F	110°F	1/2"	NAT.	(2) 4" Dia.	100#	REZNOR UDAS-75 SEPARATED COMBUSTION UNIT WITH WALL MOUNTED SENSOR

GENERAL NOTES:

- A- THE CONTRACTOR SHALL CHECK AND VERIFY ALL DIMENSIONS AND CONNECTIONS ON THE JOB SITE. ALL WORK SHALL BE EXECUTED FROM MEASUREMENTS TAKEN AT THE SITE.
- B- THE MECHANICAL CONTRACTOR SHALL BE RESPONSIBLE TO INSURE PROPER CODE CLEARANCES FOR ELECTRICAL AND MECHANICAL ACCESS WHEN INSTALLING ANY EQUIPMENT SUPPLIED BY THE MECHANICAL CONTRACTOR.
- C- IT IS CRITICAL THAT THIS CONTRACTOR COORDINATE EQUIPMENT LOCATIONS WITH PIPING, DUCTWORK, ELECTRICAL CONDUIT AND BUILDING STRUCTURE TO INSURE CODE COMPLIANCE.
- D- CEILING DIFFUSERS ARE SHOWN IN APPROXIMATE LOCATIONS. REFER TO LIGHTING PLANS AND REFLECTED CEILING PLAN FOR EXACT LOCATIONS.
- E- DUCT DIMENSIONS CALLED OUT ON DRAWINGS ARE INSIDE FREE AREA DIMENSIONS. ACOUSTICAL DUCT LINER ARE TO BE ADDED TO OVERALL MEASUREMENTS.
- F- ALL DUCTWORK AND PIPING WHICH PASSES THRU FIRE RATED WALLS TO BE FIRE STOPPED WITH APPROVED FOAM OR SEALANT. REFER TO SPECIFICATIONS FOR APPROVED MANUFACTURERS.

ORIGINAL DRAWING SIGNED BY: DWAYNE C. SUDWECKS
DATE ORIGINAL SIGNED: April 1, 2019 ORIGINAL ON FILE AT:
ENGINEERED SYSTEMS ASSOCIATES 1355 EAST CENTER,
POCATELLO, IDAHO 83201

Engineered Systems Associates
1355 EAST CENTER
POCATELLO, IDAHO 83201
PHONE: (208) 233-0501
FAX: (208) 233-0529
EMAIL: esa@engsystems.com
ESA JOB NUMBER: 18023

A NEW FACILITY FOR:
BURLEY HIGHWAY DISTRICT
 MECHANICAL SCHEDULES & DETAILS

Laughlin Ricks Architecture
 architecture/planning
 935 Shoshone Street North * Twin Falls, Idaho 83301
 (208) 736-8050 Fax: (208) 733-0950

DATE: 11/30/18
 MLI DCS
 Drawn Checked
M3.2